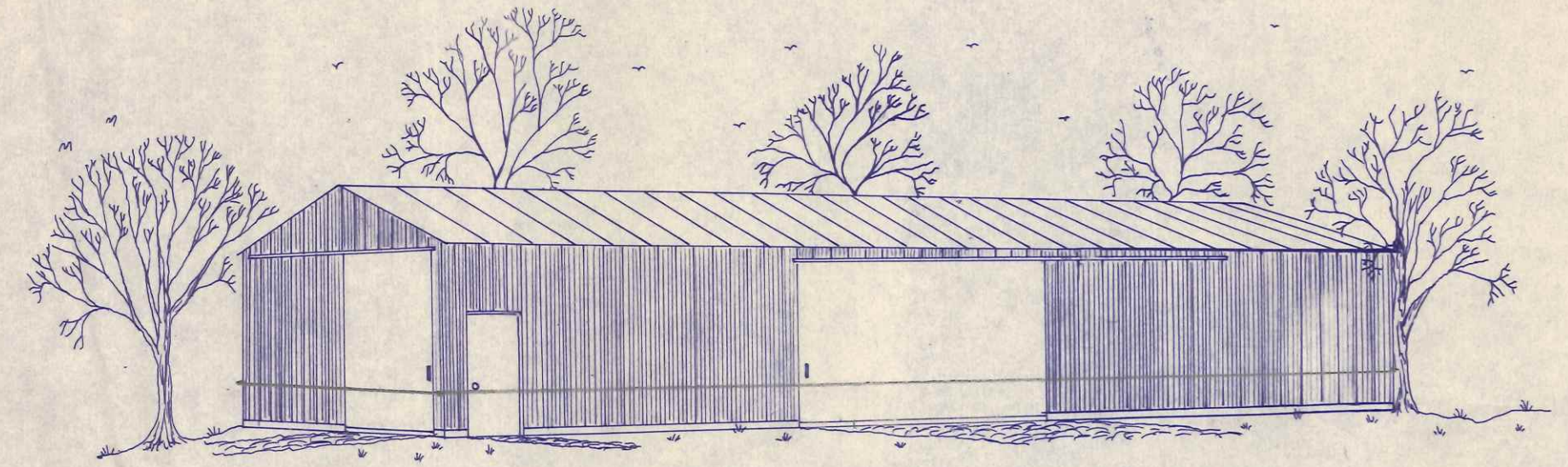
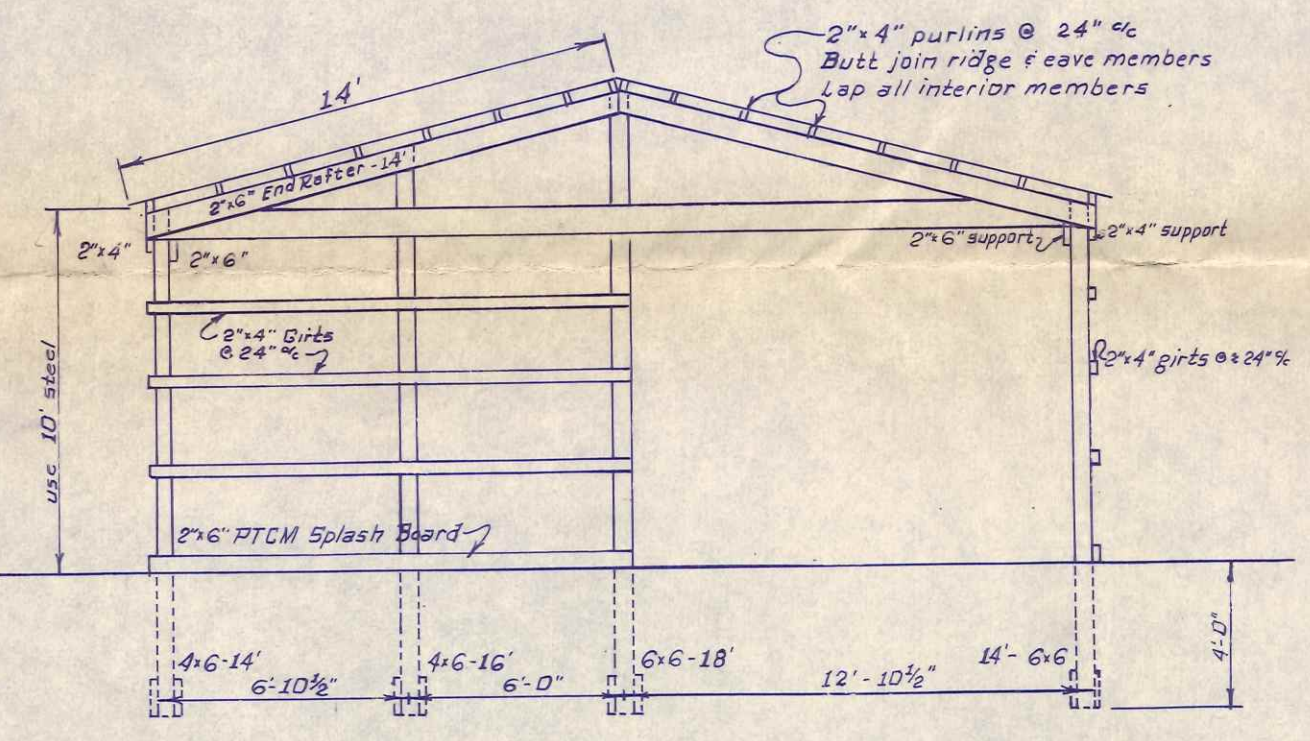


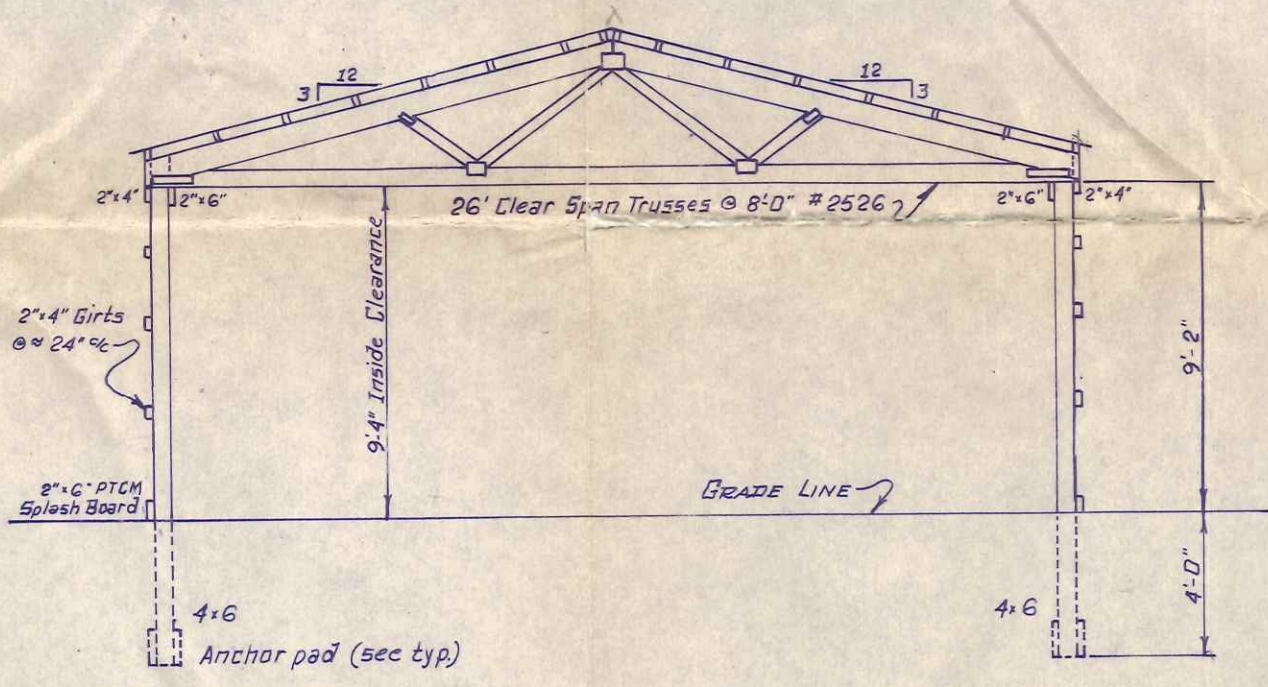
FLOOR PLAN & ROOF FRAMING
Scale: 1/8" = 1'-0"



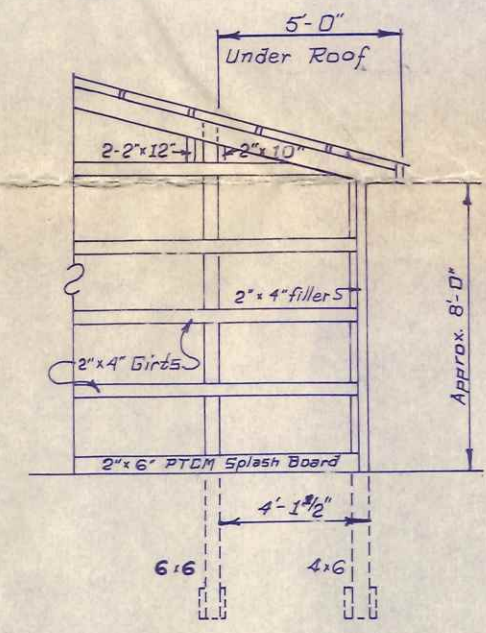
25 x 40
~~26 x 64~~ Clear Span



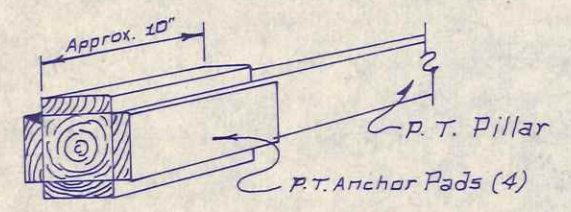
END FRAMING ELEVATION
Scale: 3/16" = 1'-0"



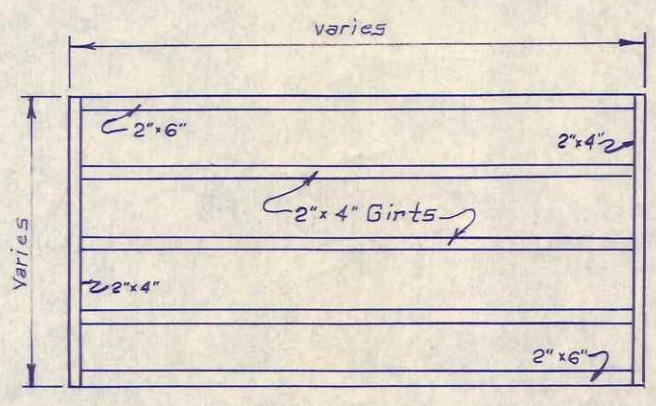
CROSS SECTION
Scale: 3/16" = 1'-0"



5' OVERHANG DETAIL
Scale: 3/16" = 1'-0"



ANCHOR PAD DETAIL
N.T.S.

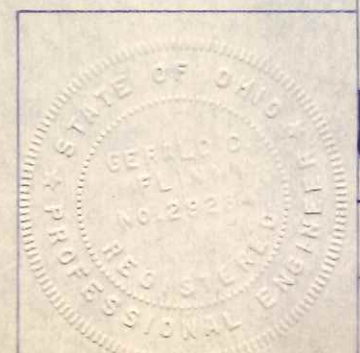


TYPICAL DOOR FRAMING
N.T.S.

NOTES & SPECIFICATIONS
Base building 26' x 64' = 1664 square feet.
All electric to conform to State and National Codes (D.B.C. BB-49)
Plumbing to conform to D.B.C. BB-51
All members to be fastened with 30d, case-hardened, ring shank nails, @ 1 per 2" stock material.
Roofing to be standard gauge, channel drain steel.
Siding to be standard gauge colored steel or galvanized.
All structural members to be a minimum 1750f grade.
Footers to be calculated for a maximum 4000 psf soil bearing capacity.
Skylight material to be Filon 160 Class II
Service doors to be 3'-0" x 6'-8" H.M. Doors with Class "B" hardware.
All pillars to have Sakrete pads for D.B.C. requirement.

OPEN SIDE BUILDING 6x6 Pillars @ 16'-0"		
	17-20 psf. L.L.	25 psf. L.L.
Standard Eave	2 - 2" x 12"	2 - 2" x 12" & 1 - 2" x 8"

520 E. Riverview
E SR424
Michaelis & Varner



MORIART BUILDING

Subsidiary of The Wickes Corporation

DATE 5-12-70 DRAWN BY q.c.f. DRAWING NO. 250000